

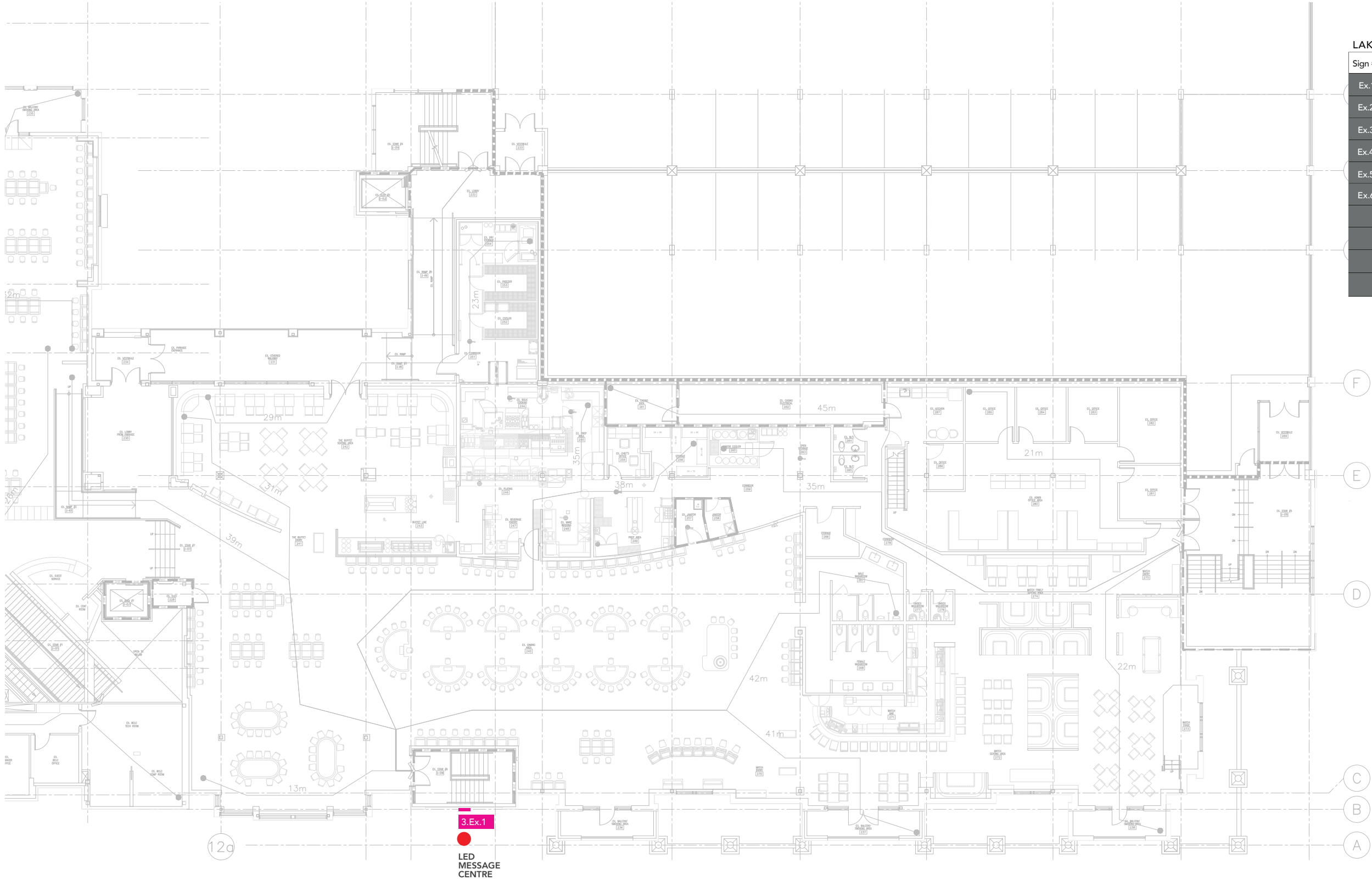
KELOWNA, PLAYTIME CASINO WAYFINDING & SIGNAGE

EXTERIOR SIGNAGE
LED MESSAGE CENTRE
DECEMBER 2017

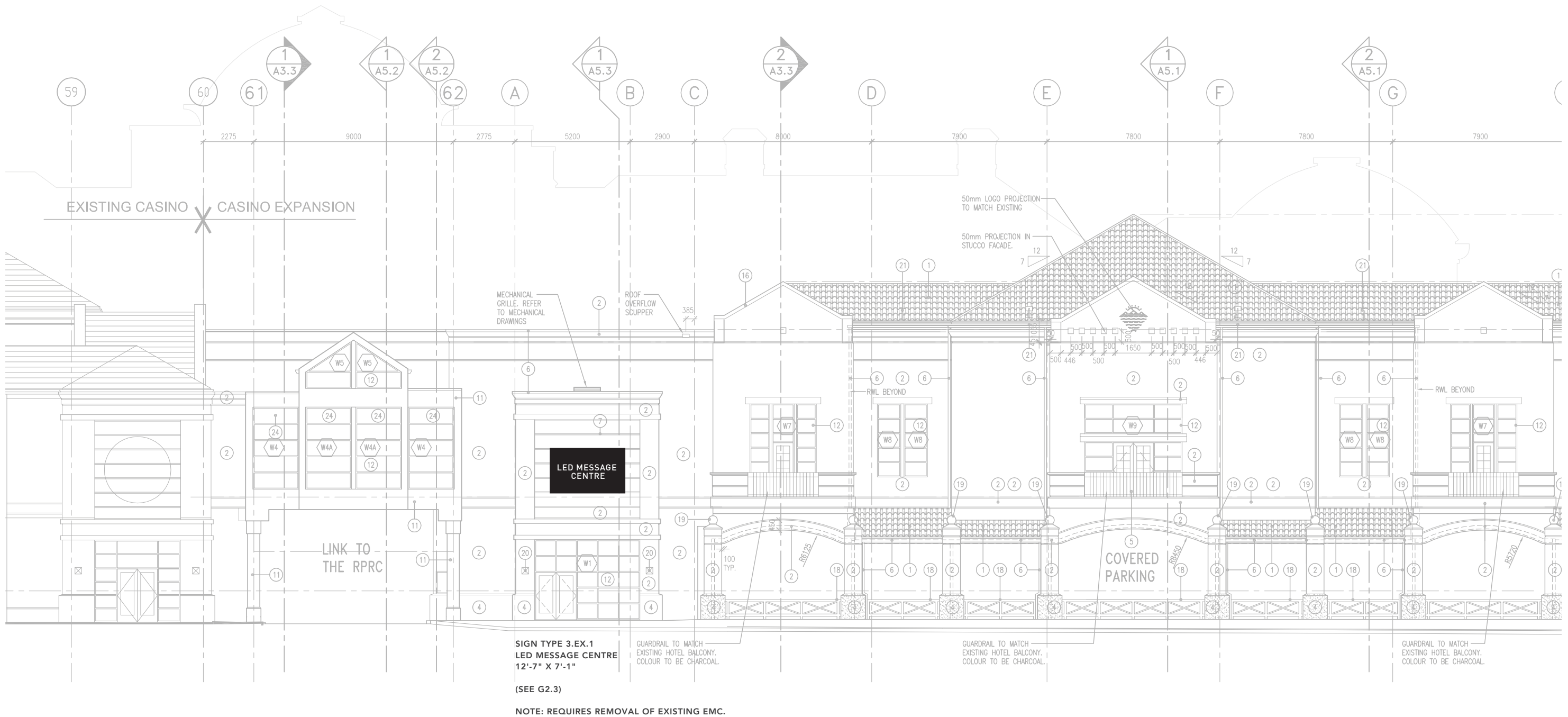
5.Ex.1
Quantity No.
Exterior
Sign Type No.

LAKE CITY CASINO			
Sign #	Key	Sign Type	Qty.
Ex.1		Primary Restaurant Identification	0
Ex.2		Secondary Restaurant Identification	0
Ex.3		LED Message Centre	1
Ex.4		Entrance Identification	0
Ex.5		Secondary Entrance Identification	0
Ex.6		Playtime Casino Identification	0

Electrical required
Note: requires removal of existing EMC.



1
G01
PLAYTIME CASINO, KELOWNA: WAYFINDING & SIGNAGE
EXTERIOR SIGN LOCATION PLAN – DP
SCALE: 3/64" = 1'-0"

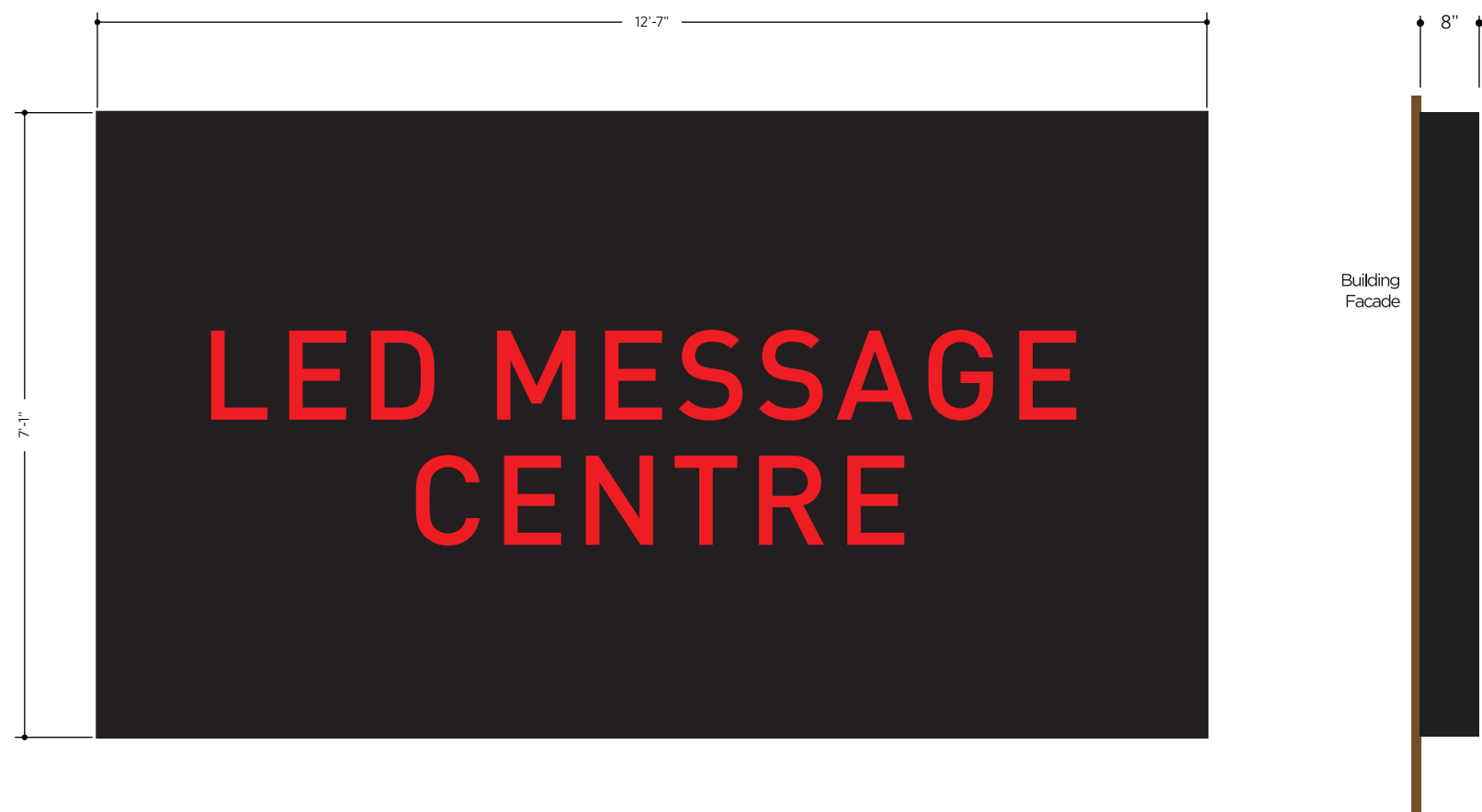


1
G02 PLAYTIME CASINO, KELOWNA: WAYFINDING & SIGNAGE
EAST ELEVATION – DETAIL – DP
SCALE: 1:200

NOTE:
ELEVATIONS & GRAPHICS FOR VISUAL REFERENCE ONLY.

EXTERIOR SIGN TYPE 3: LED MESSAGE CENTRE SIGN (WALL-MOUNTED)

Internally illuminated aluminum cabinet with digital screen:
12'-7" wide x 7'-1" high screen; 8" thick panel (TBC);
Optec model INF-MOD-10-RGB-Z-P-S-QR 10mm Matrix 216 x 384 .



1
2.3 PLAYTIME CASINO, KELOWNA: WAYFINDING & SIGNAGE
SIGN TYPE 3: LED MESSAGE CENTRE
SCALE: 1/2" = 1'-0"

SIGN TYPE: 3.EX.1

2
2.3 PLAYTIME CASINO, KELOWNA: WAYFINDING & SIGNAGE
SIGN TYPE 3: LED MESSAGE CENTRE
SECTION DETAIL
SCALE: 1/2" = 1'-0"

NOTE:
ELEVATIONS & GRAPHICS FOR VISUAL REFERENCE ONLY.